

## PART 2: TOPICAL PAST YEAR QUESTIONS

Topic 1: Whole Numbers				Topic 2: Decimals	
Paper 1		Paper 1		Paper 1	
Question No	Answer Key	Question No	Answer Key	Question No	Answer Key
1.	2	27.	131	1.	3
2.	3	28.	22	2.	2
3.	13 800	29.	9	3.	\$8.45
4.	12, 24	<b>Paper 2</b>		4.	2
5.	89, 90	Question No	Answer Key	5.	3
6.	2	1a.	2385	6.	1.13
7.	3	1b.	3852	7.	0.875
8.	4	2.	64	8.	3
9.	604	3a.	9605	9.	2
10.	75¢	3b.	5960	10.	3
11.	4	4.	5	11.	32.6
12.	3	5.	11	12.	28
13.	11 020	6a.	Helen ; \$12	13.	0.57 kg
14.	1067	6b.	1.026 kg	14.	4
15.	61	7.	162 g	15.	15.3
16.	229	8a.	15; 16	16.	$1\frac{12}{15}$
17.	2	8b.	472	17.	\$2.40
18.	3	9.	147	18.	3
19.	3	10.	19 cm	19.	2
20.	60 052	11.	28,32	20.	11.35
21.	1678	12a.	830 g	21.	0.4
22a.	15	12b.	152 g		
22b.	4				
23.	1140 ml				
24.	2				
25.	3000				
26.	18				

Topic 3: Fractions				Topic 4: Percentage	
Paper 1		Paper 1		Paper 1	
Question No.	Answer Key	Question No.	Answer Key	Question No	Answer Key
1.	4	18.	4	1.	20%
2.	3	19.	$1\frac{3}{8}$	2.	3
3.	$\frac{1}{20}$	20.	$\frac{7}{12}$	<b>Paper 2</b>	
4.	$\frac{5}{16}$	<b>Paper 2</b>		1a.	360
5.	4	1.	135	1b.	468
6.	1	2a.	$\frac{1}{30}$	2a.	\$170
7.	3	2b.	\$420	2b.	\$212.50
8a.	$\frac{13}{15}$	3a.	$\frac{5}{16}$	3.	\$16
8b.	$1\frac{7}{50}$	3b.	432	4.	\$46
9.	1.32 litres	4.	105	5a.	102
10.	3	5a.	$\frac{1}{21}$	5b.	12.5%
11.	3	5b.	75	6a.	63
12a.	$\frac{7}{12}$	6.	$\frac{11}{45}$	6b.	13; small
12b.	eg. $\frac{3}{10}$	7a.	256		
13.	33	7b.	7		
14.	3	8.	5700 g		
15.	4	9a.	Haziq; Eric		
16.	$\frac{7}{12}$	9b.	\$312		
17.	T ; F ; T				

Topic 5: Ratio		Topic 6: Geometry			
Paper 1		Paper 1		Paper 2	
Question No	Answer Key	Question No	Answer Key	Question No	Answer Key
1.	4	18.	2	10a.	100°
2.	60%	19.	4	10b.	70°
<b>Paper 2</b>		20a.	See index 3	10c.	is not; is not
1a.	7 : 9 : 3	20b.	See index 3	11a.	114° or 115°
1b.	1083	21.	2	11b.	5.2cm
2.	\$192	22.	1	11c.	8cm <sup>2</sup>
3a.	9 : 13	23.	2	12a.	158
3b.	330	24.	70°	12b.	105
4.	154	25a.	DE	12c.	trapezium; is; is not
5a.	15	25b.	BA and CD	<b>Topic 7: Data</b>	
5b.	120	26.	98°	<b>Paper 1</b>	
5c.	216	27.	3	Question No	Answer Key
6a.	12:10:3	28.	3	1.	1
6b.	$\frac{7}{20}$	29.	4	2a.	95 °C
<b>Topic 6: Geometry</b>		30.	2	2b.	8 °C/min
<b>Paper 1</b>		31.	3	3.	T ; F ; F
Question No.	Answer Key	32.	125°	4a.	Cities A, D
1.	3	33.	T; South-East	4b.	City D
2.	2	<b>Paper 2</b>			21 °C
3.	4	1a.	88°	5.	3
4.	3	1b.	57°	6.	4
5a.	A	2a.	37°	7.	2
5b.	H	2b.	74°	8a.	8 : 12 : 15
6.	235°	2c.	163°	8b.	45
7a.	8.2 cm	3.	67°	9a.	37.5 min
7b.	110°	4a.	58°	9b.	12 km/h
8a.	See index 1	4b.	102°	10.	4
8b.	See index 1	4c.	is ; is not ;	11.	4
9.	4		trapezium	12a.	72
10.	4	5a.	4.8cm	12b.	increased
11.	2	5b.	105°	13.	1
12.	1	6a.	14°	14.	4
13.	Q, R	6b.	23°	15.	4
14a.	e	7a.	39°	16.	2
14b.	b and d	7b.	111°	17.	\$15
15a.	See index 2	7c.	99°	18a.	Oct
15b.	7	8.	62°	18b.	Sep, Nov
16.	3	9a.	south; west		
17.	2	9b.	A, B, D		

Topic 7: Data		Topic 8: Area and Volume			
Paper 2		Paper 1		Paper 2	
Question No	Answer Key	Question No	Answer Key	Question No	Answer Key
1a.	Ming	1.	1	11a.	7200 cm <sup>3</sup>
1b.	14.2 s	2.	49 cm <sup>2</sup>	11b.	32 cm
2a.	350	3.	4	12a.	25.5 m
2b.	Blue, Yellow	4.	135 cm <sup>2</sup>	12b.	136 m
2c.	84%	5a.	See index 4	13a.	132 cm
3a.	H ; F ; B	5b.	1 : 1	13b.	546 cm <sup>2</sup>
3b.	$\frac{2}{9}$	6.	8	14a.	23 cm
4a.	35	7a.	46 cm <sup>2</sup>	14b.	45 cm
4b.	375	7b.	60	15a.	360 cm
5a.	10 00	8.	36	15b.	8800 cm <sup>2</sup>
5b.	14 00 to 15 00	9.	2	16a.	21 cm
5c.	7	10.	4	16b.	13 cm
6a.	25%	11.	150π cm <sup>2</sup>	17a.	35 cm
6bi.	576	<b>Paper 2</b>		17b.	242 cm
6bii.	421.5	1.	300 cm <sup>2</sup>	18.	30 cm
7.	N ; F ; T	2a.	47.1 cm	19a.	40 cm
8a.	\$240	2b.	1156.5 cm <sup>2</sup>	19b.	1500 cm <sup>2</sup>
8b.	\$48	3a.	30 cm		
8c.	\$300	3b.	28		
9a.	20 min	4a.	16 cm <sup>2</sup>		
9b.	09 00 to 09 05	4b.	19 cm		
	09 15 to 09 20	5a.	11 cm		
9c.	0 °C/min	5b.	57 cm <sup>2</sup>		
10a.	W; Z; Y; X	6a.	329.7 cm <sup>2</sup>		
10b.	150	6b.	141.88 cm		
11a.	3.2 l/min	7a.	4.65 liters		
11b.	60 l	7b.	$\frac{13}{44}$		
11c.	2.8 l/min	8a.	138 cm		
12a.	\$48	8b.	630 cm <sup>2</sup>		
12b.	\$128	9a.	(2x + 4) cm		
13a.	R;K;B; C	9b.	572 cm <sup>2</sup>		
13b.	$\frac{9}{26}$	10a.	22 cm		
		10b.	4312 cm <sup>3</sup>		

Topic 9: Algebra		Topic 11: Measurement	
<b>Paper 1</b>		<b>Paper 1</b>	
Question No	Answer Key	Question No	Answer Key
1.	3	1.	1
2a.	41	2.	3
2b.	$9\frac{4}{9}$	3.	1
3.	3	4.	2
4.	22 cm	5.	2
5a.	65		
5b.	8		
6.	4		
<b>Paper 2</b>			
1.	14		
2a.	$6y + 2$		
2b.	7		
3a.	$\$(9m + 2)$		
3b.	6		
<b>Topic 10: Rate and Speed</b>			
<b>Paper 1</b>			
1.	$(34y + 140)\text{¢}$		
2.	100 m/min		
3.	Shop: A \$12		
<b>Paper 2</b>			
1.	\$6.28		
2a.	1512		
2b.	18 min		
3a.	7.5 km		
3b.	Jane		
	3.3 km		
4.	\$0.52		
5.	3.6 km/h		

**PART 3: ORIGINAL MOCK PAPERS  
PSLE MOCK EXAM PRACTICE 1**

Paper 1			
Booklet A		Booklet B	
Question No.	Answer Key	Question No.	Answer Key
1.	3	19.	20 ; 59
2.	2	20.	9
3.	3	21.	42
4.	3	22.	$\frac{7}{13}$
5.	3	23.	33.42 cm
6.	4	24a.	See index 6
7.	1	24b.	See index 6
8.	4	25.	36
9.	4	26.	60°
10.	1	27a.	3 ; 10 ; 12 ; 5
11.	3	27b.	90%
12.	1	28a.	40; See index 7
13.	2	28b.	72°
14.	1	28c.	405
15.	3	29.	10
16.	3	30.	\$204
17.	4		
18.	3		

**PSLE MOCK EXAM PRACTICE 1**

<b>Paper 2</b>				
<b>Question No</b>	<b>Answer Key</b>		<b>Question No.</b>	<b>Answer Key</b>
1a.	9605		10a.	6 cm
1b.	5096		10b.	216 cm <sup>2</sup>
2.	226		11a.	\$2360
3.	51		11b.	\$2004
4a.	Food ; \$1260		12a.	5 m
4b.	5%		12b.	30 min
5a.	4 cm		13a.	2 cm
5b.	30 cm <sup>2</sup>		13b.	300 milliliters
6a.	31°		13c.	24 min
6b.	116°		14a.	42
7.	4.56 cm <sup>2</sup>			189
8.	315			441
9a.	175%		14b.	\$945
9b.	132		15a.	7 cm
			15b.	36 cm

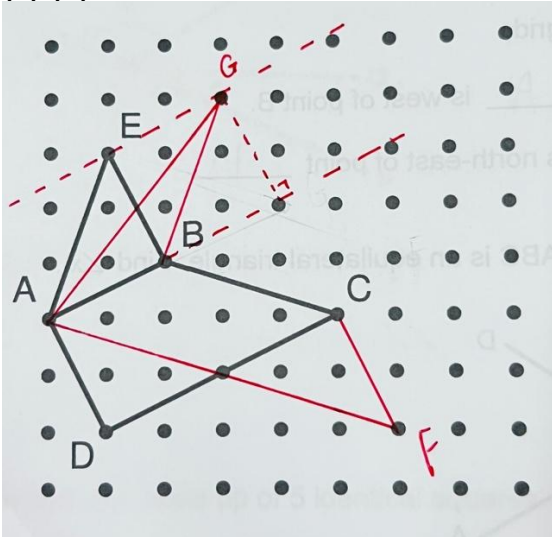
**PSLE MOCK EXAM PRACTICE 2**

<b>Paper 1</b>			
<b>Booklet A</b>		<b>Booklet B</b>	
Question No.	Answer Key	Question No.	Answer Key
1.	2	19.	$6\frac{2}{3}$
2.	2	20.	$2\frac{5}{8}$
3.	2	21.	25
4.	3	22.	120
5.	4	23a.	60 cm
6.	4	23b.	54 cm <sup>2</sup>
7.	3	24.	36 cm <sup>3</sup>
8.	2	25a.	$\frac{3}{10}$
9.	3	25b.	Type: Ring Amount: \$44
10.	2	26a.	200
11.	1	26b.	See index 9
12.	3	26c.	113
13.	3	27.	58°
14.	4	28.	6
15.	4	29.	6
16.	1	30.	123
17.	3		
18.	3		

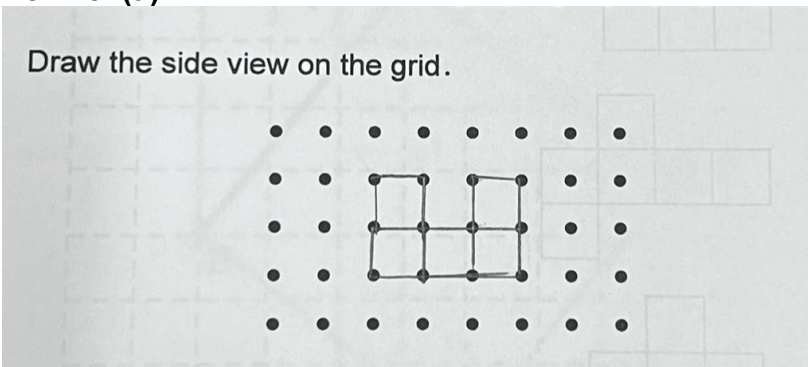
**PSLE MOCK EXAM PRACTICE 2**

<b>Paper 2</b>				
Question No	Answer Key		Question No	Answer Key
1a.	2685		8a.	900 m
1b.	6852		8b.	4 min – 8 min
2.	14		8c.	2700 m
3.	$45^\circ - x$		9.	$1.14 \text{ cm}^2$
4a.	4 cm		10.	960
4b.	$18 \text{ cm}^2$		11.	See Index 11
5a.	12		12a.	$6 \text{ cm}^2$
5b.	$0.03 \text{ m}^2$		12b.	$1.8 \text{ cm}^2$
6a.	(Shown on chart) 25%		13a.	160
6b.	60 g		13b.	\$32
6c.	(Drawn on bar chart) Butterfat: 60 g Lactose: 70 g Others: 20 g See Index 10		14a.	Amy
7a.	160		14b.	\$2.40
7b.	32		15a.	$4000 \text{ cm}^3$
			15b.	$1577.72 \text{ cm}^2$
			15c.	\$1450

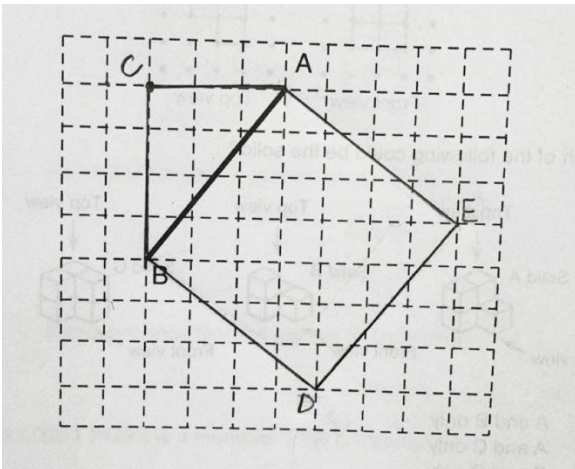
**Index 1**  
**P48. 8.**  
**(a) (b)**



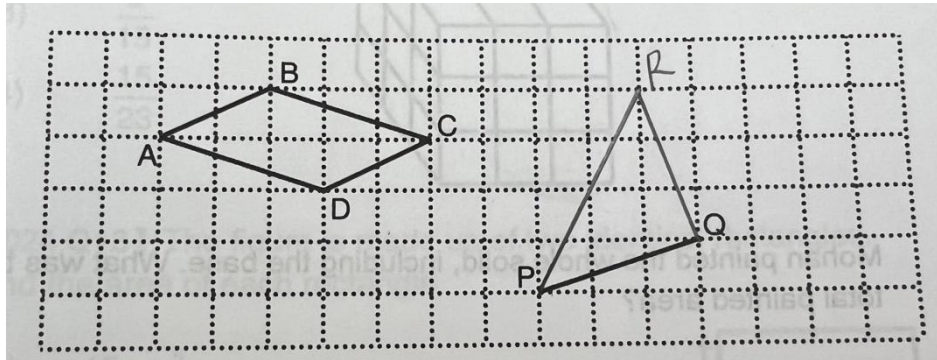
**Index 2**  
**P51 15. (a)**



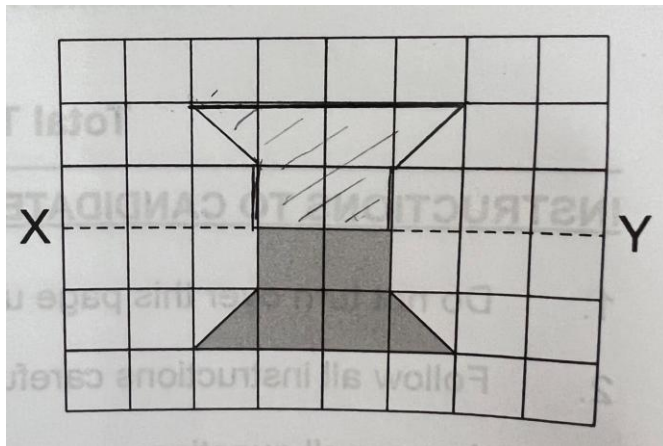
**Index 3**  
**P53.20. (a)(b)**



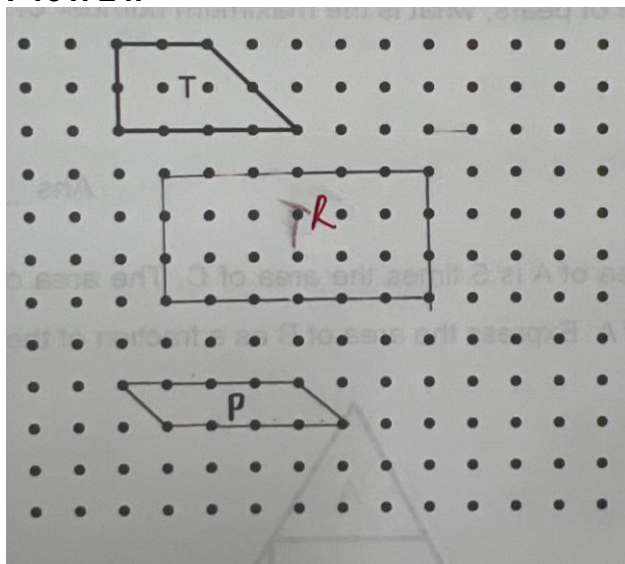
Index 4  
P89.5.(a)



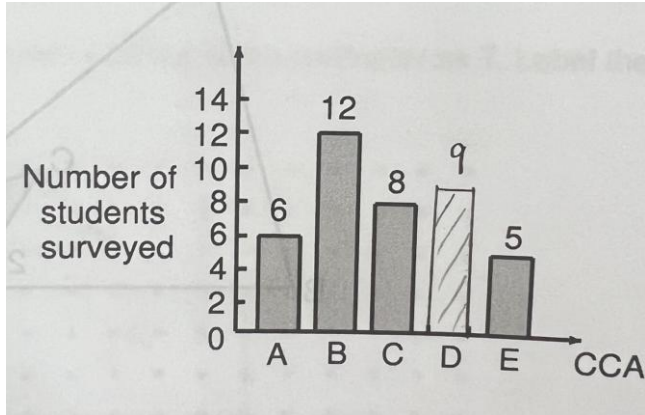
Index 5  
P129. 17.



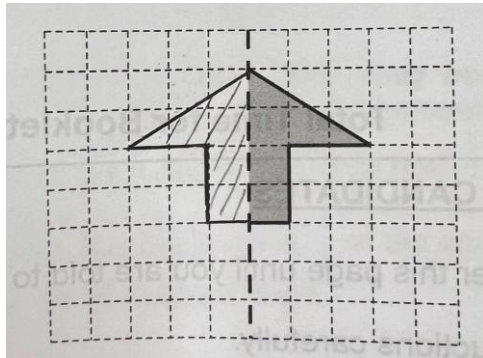
Index 6  
P131. 24.



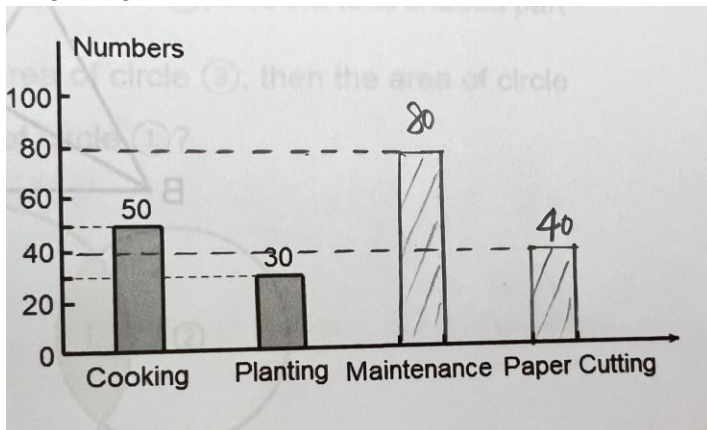
**Index 7**  
**P133. 28.**



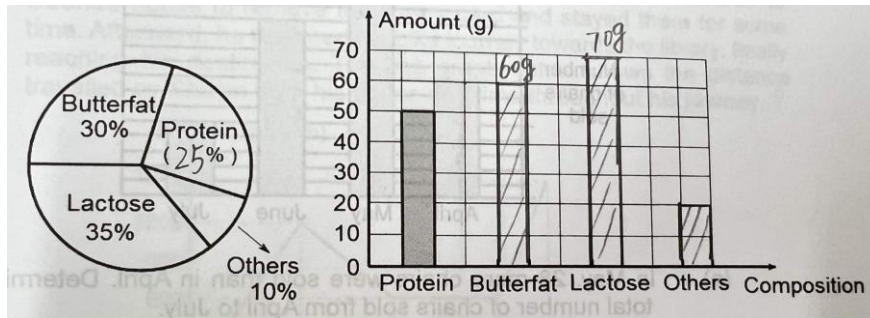
**Index 8**  
**P154. 17.**



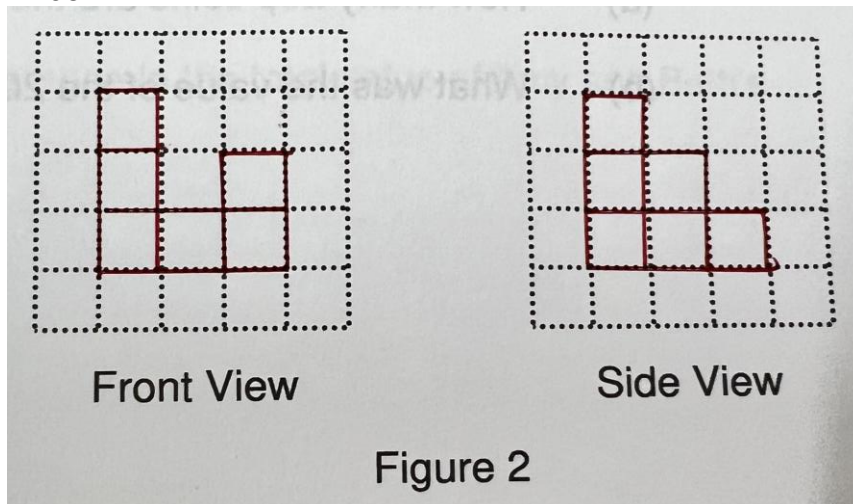
**Index 9**  
**P157. 26.**



**Index 10**  
**P164. 8.**



**Index 11**  
**P168**



**Figure 2**